

Instruction to Windchill Risk and Reliability

1. Start Windchill Risk and Reliability 11.1 in the desktop. Be sure not to click on the Administrator software.
2. Login with NET\CID and your password, then login to the program with username "Student" and password "Student".
3. Select the tools FMEA, FTA, RBD, and Weibull. This is what you need for WS1 and WS3, see **Figure 1**.
4. Choose the project number that you have signed up for in the "Project Navigator" tab, to the left (**Figure 2**).
5. Start WS1, with the file "Uppgift 1".
6. There is no "saving" button in the software. It saves automatically.
7. We advise that when you are finished with the exercises, you take a print of the results (FTA, FMEA, RBD, Weibull) using the "Snipping tool". Unfortunately, the report function of Windchill Risk and Reliability is limited.

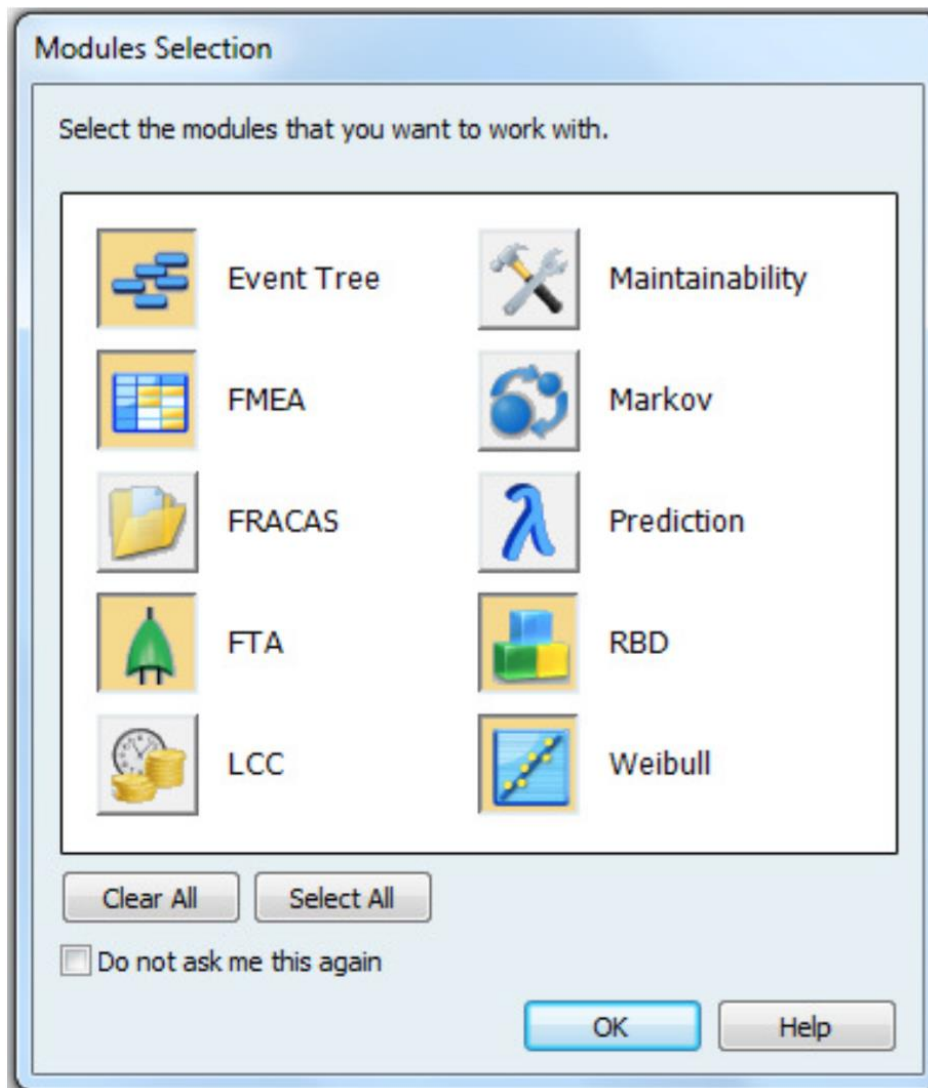


Figure 1 - Tools

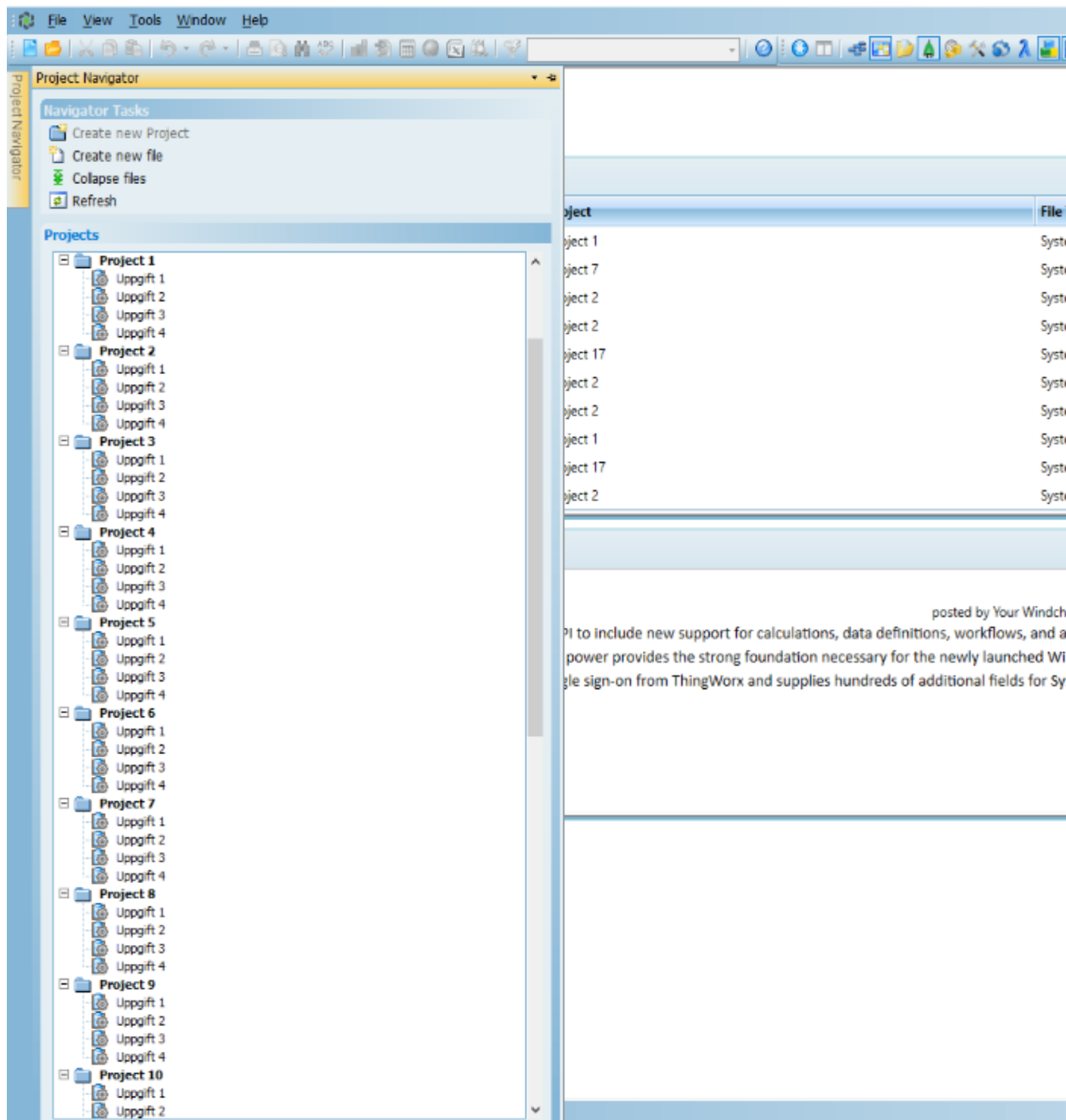


Figure 2 – Project navigator